

Global Experience Multimodal (GEM) Immersive Engineering

UX/HMI



| SOFTWARE



Immersive Engineering

Virtual reality

Interacting

ART

Leap motion

Finger tracking

VRED

Menu

Display

Pointer object

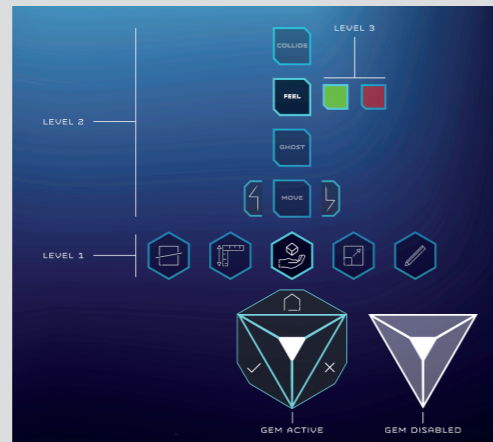
Commands

Innovations/advantages

Immersive virtual reality system; user as an active operator of the scene; flexible and usable process with any means for interacting with virtual reality; one-touch effect on the movement made by the operator, control object configuration, which comprises multiple selectively viewable, hierarchical command logic levels; 3D Virtual Menu coupled with the wrist of the other hand (smartwatch); index finger of the virtual representation of a user's hand.

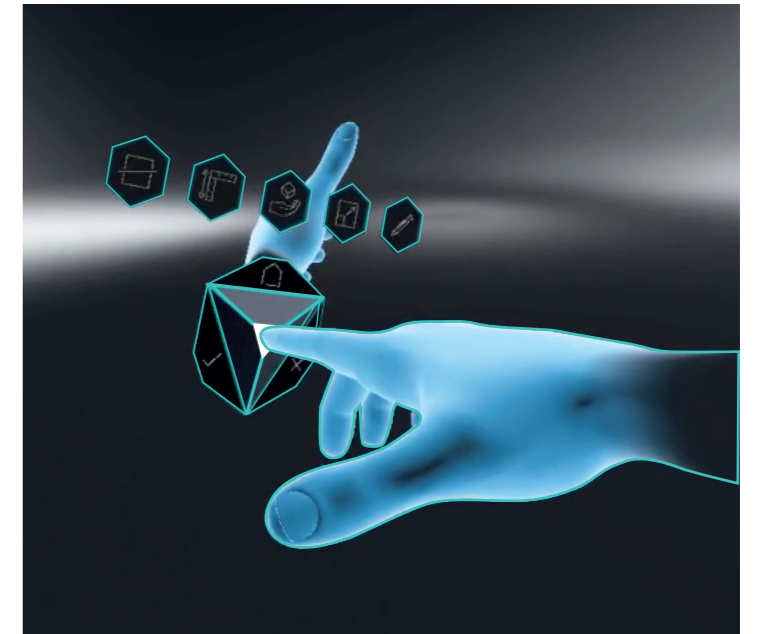
Application field

OEMs;
Vehicles engineering;



Product insight

Italdesign has invented a powerful immersive virtual reality system that allows users to interact actively with objects in a virtual scene via a configurator, which is also represented in the virtual reality scene. The user operates without having to interrupt the experience or resort to external support via a 3D virtual menu on the wrist of the other hand, similar to a smartwatch. It is a support system designed for OEMs and operators in the field of automotive engineering, but it is easily applicable to any field that requires a virtual customization environment in which the user can operate without any interruption.



Patent Information

Priority Date – 1 September 2020

Application Number

PCT/IT2020/000062

Publication Number

WO 2022/049608 A1

IPR Dossier n. A27

National patent filings



Available from December 1st, 2021

italdesigntoipr@italdesign.it

The content of this document is the property of Italdesign Giugiaro Sp.A. All rights reserved.

ITALDESIGN
— be ideneers —