

Method for controlling the lighting of a rear lamp cluster of a vehicle and a rear lamp cluster of a vehicle implementing said method

Car comp.
Bodywork



Aerospace Power on LED Tuning Show
Light Geneva Motorshow

Innovations/advantages

Visually signal the starting of a vehicle through its lights;
Innovative and original dynamic aesthetic effect;
Process trigger signal, customizable *
(for example, an acceleration manoeuvre)

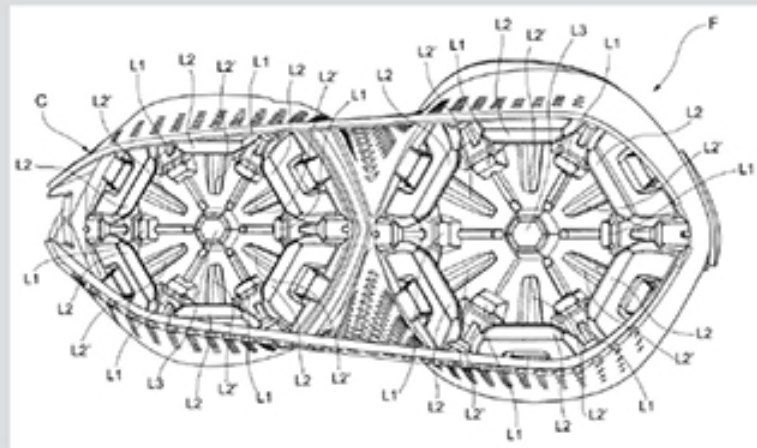
Application field

OEMs;

Product insight

Italdesign has patented a lamp cluster whose light sources are programmable in terms of timing and brightness. For example, it is possible to visually signal the starting of a vehicle through its lights. The effect resembles that of an aeronautical or aerospace jet engine, with extremely innovative and sophisticated aesthetic details on any type of car and with the option of driver customization *.

*Tuning subject to restrictions regarding national highway codes.



Patent Information

Priority Date – 4 March 2019

Application Number

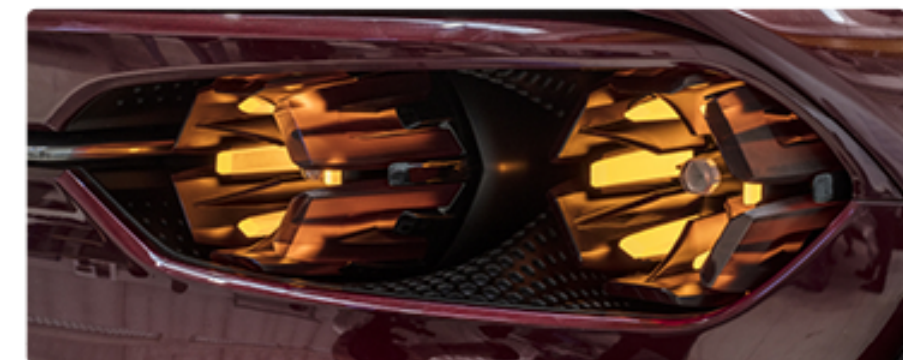
PCT/IB2020/051769

Publication Number

WO 2020/178722 A1

IPR Dossier n. A10

National patent filings



italdesigntoipr@italdesign.it

The content of this document is the property of Italdesign Giugiaro Sp.A. All rights reserved.

Available from April 15th, 2020

ITALDESIGN
— be ideneers —