

Adjustable pedal and steering mechanism

Car comp.
Bodywork



ERGONOMICS



Pedals

Seats

Commands

Steering wheel

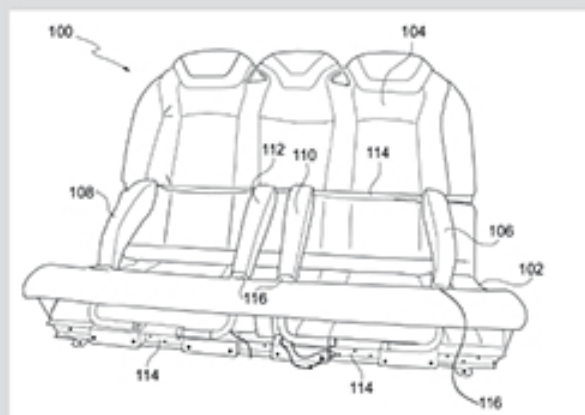
Adjustable mechanism

Innovations/advantages

Control unit adjustable sideways in the Y direction and in the other two spatial directions;
All drivers can find an ergonomically correct driving position;
Seat adjustable using control unit with good lateral containment of the driver in any driving position;
Left, right or centre driving position.

Application field

Ground vehicles



>homologation requirements checked

Patent Information

Priority Date – 2 March 2004

Application Number

05101563.4

Publication Number

EP1571064A1

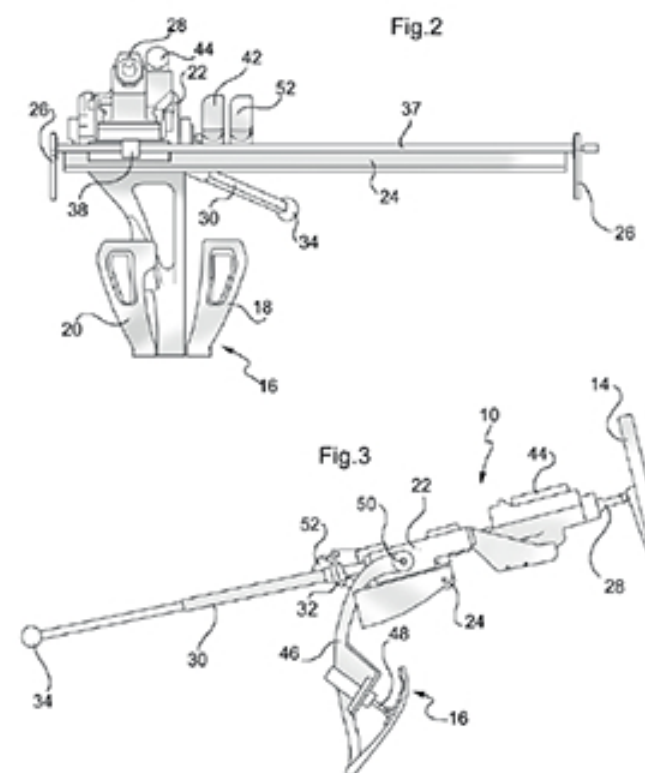
IPR Dossier n. A07

National patent filings



Product insight

A control unit for motor vehicles comprising a support body, as well as a steering wheel and pedal assembly, designed to slide in a transverse and vertical direction, enabling the user to drive on the left, right, or in the centre. Among the advantages, all drivers can find an ergonomically correct driving position with good lateral containment of the driver in any driving position.



italdesigntoipr@italdesign.it

Available from January 24th, 2020

The content of this document is the property of Italdesign Giugiaro Sp.A. All rights reserved.

ITALDESIGN
— be ideneers —