

Steering wheel support for motor vehicles



Rear view mirrors

Steering wheel

Side cameras

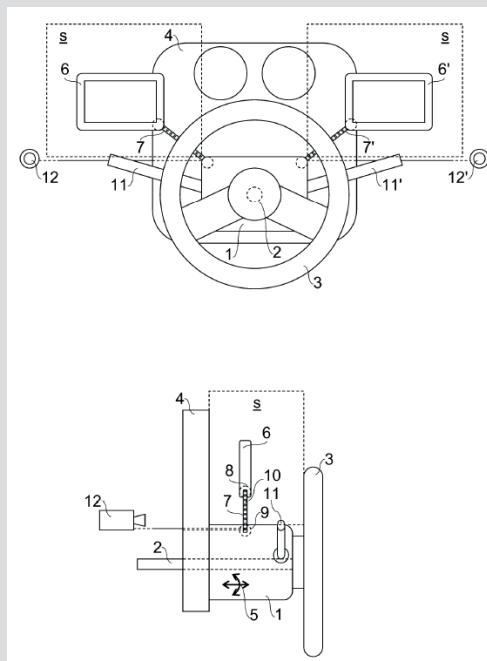
Display

Innovations/advantages

Adjustable displays to the sides of the steering wheel;
Adjusts to the driver's height for optimal positioning;
Easy to install and maintain;
Does not interfere with controls (e.g. lights or wipers).

Application field

Ground vehicles



>homologation requirements checked

Patent Information

Priority Date – 6 April 2012

Application Number

ITMI20120566A

Publication Number

ITMI20120566A1

IPR Dossier n. A05

National patent filings



Product insight

Italdesign offers an adjustable steering wheel support which can be attached to the vehicle dashboard. The device gives the driver optimal lateral visibility, with small side cameras instead of traditional rear view mirrors, and fully adjustable displays. All with a simple add-on to the car and easy maintenance to significantly increase driving comfort.



italdesigntoipr@italdesign.it

The content of this document is the property of Italdesign Giugiaro Sp.A. All rights reserved.

Available from February 03rd, 2020